

CRYSTAL XE APPLICATION NOTE

Use script into a basic recipe

1 [Introduction](#)

It may be useful in some cases to want to run a script in a basic recipe. This application note explains how to proceed with an example.

This note applies to Crystal XE version 1.06 or later.

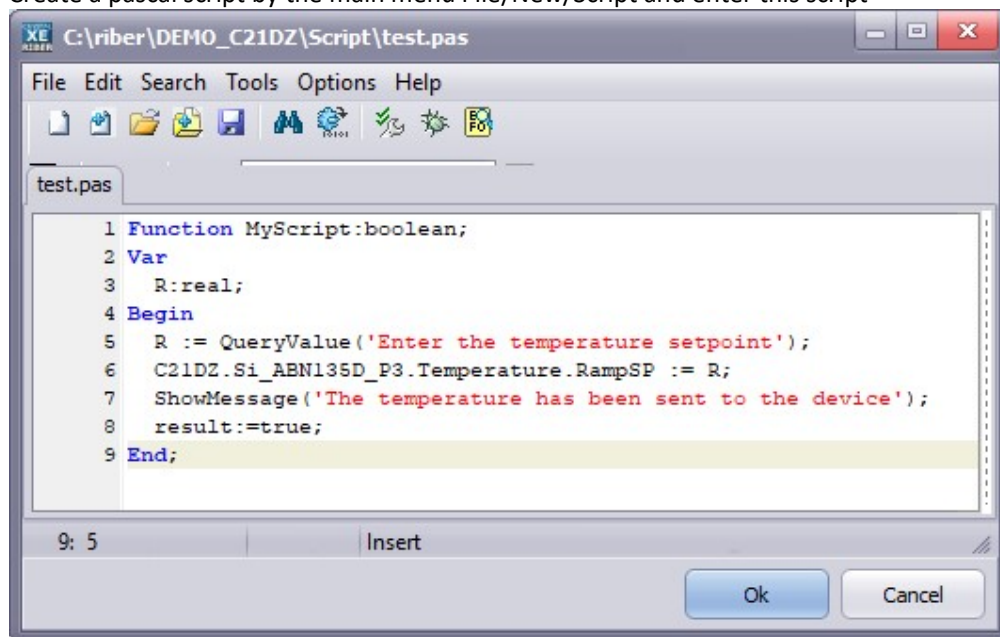
Summary:

You must create a function library (in a step file) that you must declare in the main element of the basic recipe (in the "Script Libraries" box).

In this script, you can define functions that return a Boolean and use the result of this function in a conditional layer.

2 [Create the script](#)

- 1) Create a pascal script by the main menu File/New/Script and enter this script



```
Function MyScript:boolean;  
Var  
  R:real;  
Begin  
  R := QueryValue('Enter the temperature setpoint');  
  C21DZ.Si_ABN135D_P3.Temperature.RampSP := R;  
  ShowMessage('The temperature has been sent to the device');  
  result:=true;
```

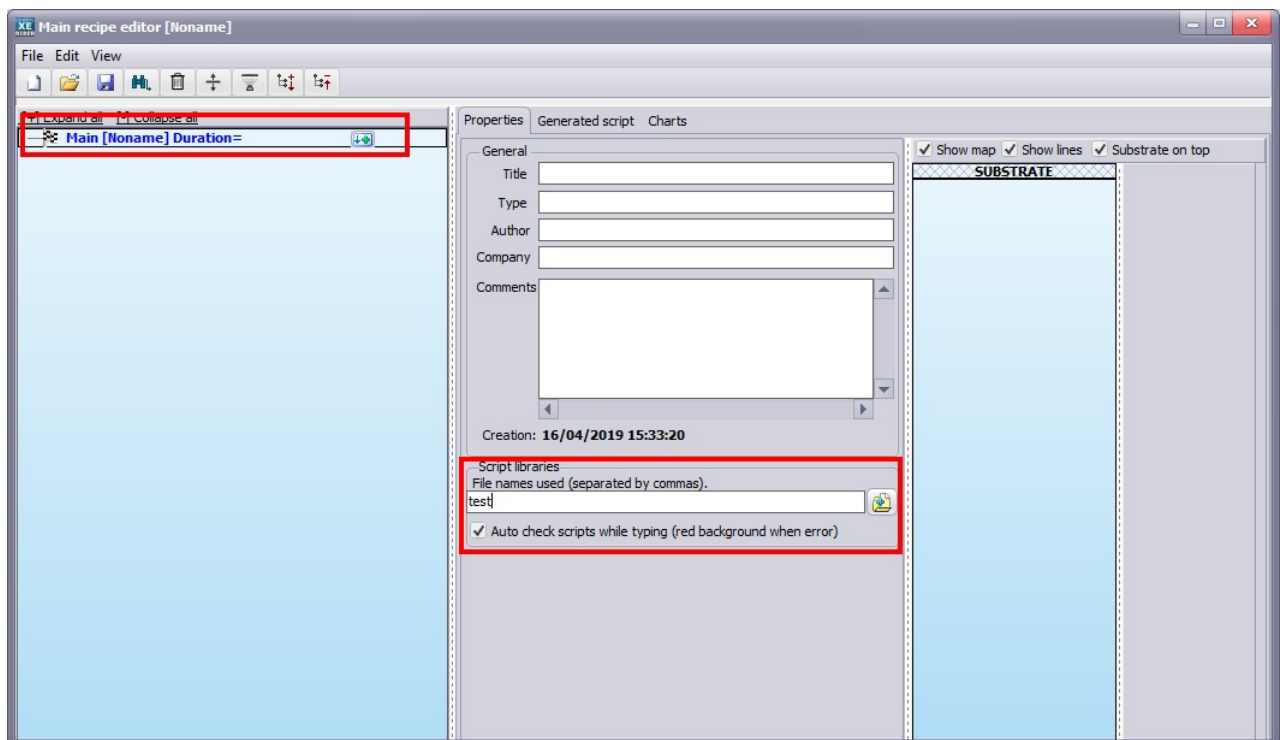
End;

You can define several functions such as "MyScript" in the same file. The file will be used as a function library. Give a name to this file: save it in the default script directory (<project directory> / script) and name it as in this example "test.pas"

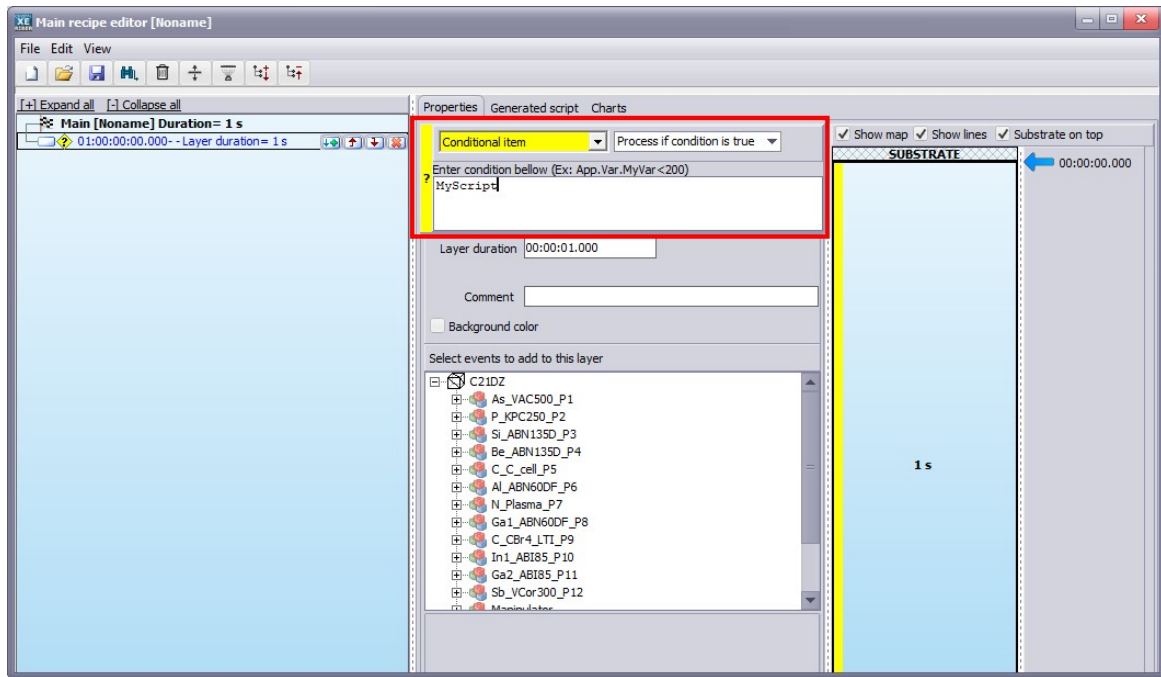
3 [Recipe editor](#)

3.1 [Enter the library name](#)

In the Basic Recipe Editor, enter the name of the script file that will be used as the library or click the button to the right to select the file.



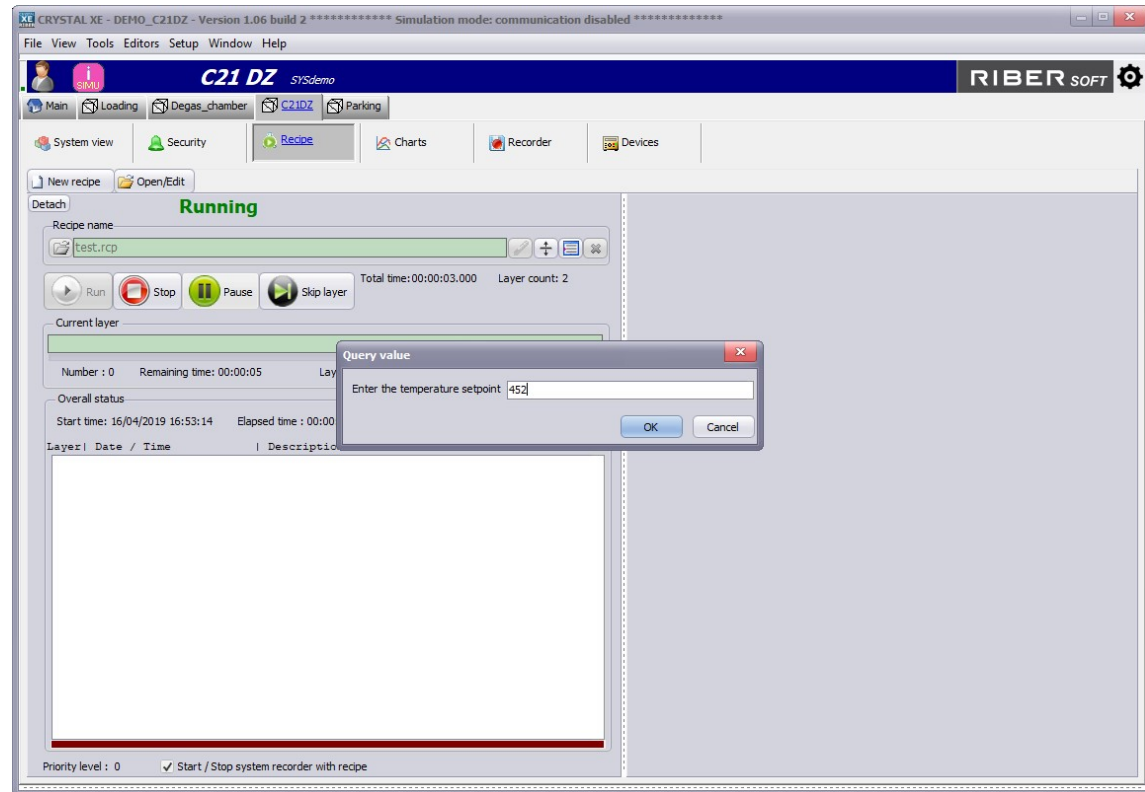
3.2 Add a condition for the layer:



If the function returns false, in this example, the contents of the layer will not be executed, depending on the conditional layer parameter (process if condition is true).

Save the recipe and run it.

4 [Run the recipe](#)



5 [Other example](#)

You can pass a parameter to the function.

Example with a string parameter:

```
Function MyScript (Comment:String) :boolean;
Begin
  Fopen(1, 'c:\temp\test.csv', fm_append);
  FSaveStr(1, GetDateTime('dd/mm/yyyy hh:mm:ss, zzz') + ':' + comment);
  Fclose(1);
  result:=true;
End;
```

Then you add the comment directly in the parameter of the function

